

# Waiatarua Community News

860 copies

April 2004

## Proposal for Upgrading the Waiatarua Community Hall's Entrance



The Waiatarua Community Hall is an under-utilised and undervalued asset. And we are going to change that! Internally it's fabulous and we'll bring the community to it – with martial arts, community breakfasts, weekly kids' drama classes, and general hireage. Externally it's so dated it's a prune. The purpose of this brief is to suggest some changes and to initiate the necessary steps to get a submission in, accepted and to get the work started.

### Background:

In Waiatarua there are no sports grounds, grassy open parks or playing fields and, as such, the Waitakere City Council (WCC) appears to spend no recreational funds on the area. Therefore, there appears justification for asking the WCC to allocate some funds towards the improvement of the only public recreational facility in Waiatarua, namely the Waiatarua Community Hall. This may be a contribution from more than one fund (Parks fund, Hall fund, Waitakere Licensing Trust, ASB Trust).

The hall was built about 30 years ago and has served the community well. However, over recent years, the hall's appeal has diminished and, as a consequence, usage has dropped off. The Ratepayers committee has for some time had serious reservations as to the safety of the fire exits from the west side of the hall and library – upgrading them is also seen as a priority. The front of the building has been altered and is now of a style that is dated rather than becoming an "icon" or "heritage building".

The development concept is to add a more enclosed and larger, sheltered porch to give the building a more open and approachable aspect than that of the current bland and unwelcoming entrance as seen from the road frontage. The upgrading of the building will attract a greater community interest in the hall and library and a greater community pride. Currently Waiatarua could be summed up as a fire station, restaurant and the TV aerial!

### Exterior:

The proposal is to improve the aesthetics of the building with a curved porch and a matching curved front, providing shelter for the entrance - a feature lacking on the current structure. This can be achieved with minimum reconstruction and would be a softer line. The sides running off from the entrance could be updated with any contemporary material, zinc alum as an example, or even just repainted.

Then, down the side of the building, add a shelter over the stairs (on the side of the building that leads down to the library). This would go some way to making the library more accessible and access safer in winter.

Lastly, removing a very overgrown garden at the side of the building outside the library and replacing it with extra parking. The road frontage could also be replanted to open the view of the hall. This, along with exposing the library side, would create awareness and would also provide an element of security through exposure.

### Signage Suggestion:

Most people would travel through Waiatarua not knowing they have a community hall or that they are even in Waiatarua. The area could easily be enhanced with some very basic signage. Maybe also bring in road safety reminders eg. "Welcome to Waiatarua", "Please slow down – you are entering Waiatarua" or "Waiatarua – gateway to the West Coast beaches". Again, it would seem there may be more than one source of funding for this expenditure.

- Wayne Maguire

## Mayor Presents Bravery Awards

Two Auckland Regional Council rangers involved in daring rescues received bravery awards from Waitakere City Council. Mayor Bob Harvey presented local rangers Andy Pedersen and Brian Chamberlain with certificates of bravery at a recent Council meeting.

Mr Pedersen's award recognised a solo rescue attempt at Karekare Beach, where he saved three women from drowning in the rugged west coast surf.

Although he called through to the Arataki Visitor Centre asking for assistance from the Westpac rescue helicopter, the Piha man realised the distressed women may not survive until help arrived. He stripped off his uniform and swam out to the women, bringing them back to shore, one by one, through the breakers. By the time the helicopter arrived, all three women were safe on the beach.

Mr Chamberlain's award recognised the time he spent with a car crash victim, whose vehicle had gone over a bank on Huia Road.

Despite the presence of smoke and discovering a fuel can on the back seat, Mr Chamberlain stayed with the badly injured driver for almost an hour until emergency services arrived to cut her free from the wreckage.

"These men selflessly risked their own lives in order to help others in trouble and the City has taken the opportunity to officially recognise that bravery," said Mayor Bob Harvey.

## Obituary

**Chris Timms** : 24<sup>th</sup> March 1947 – 19<sup>th</sup> March 2004

Chris Timms' vintage aeroplane crashed during an aerobatic manoeuvre near the Firth of Thames, killing both Chris and friend Kerry Campbell just five days before Chris' fifty-seventh birthday. A funeral and celebration of his life was held at the War Birds Hangar, Ardmore on Thursday 25<sup>th</sup> March.

Chris won a gold medal at the 1984 Olympics and a silver medal in the Tornado class yachting event at the 1988 Olympics. He continued his love of sport by passionately supporting talented young sportsmen and women in West Auckland, and was a founding member of the Don Oliver Sporting Trust. Chris was a member of the Waitakere Regional Sports Trust and also of the Stadium Development Board. The new stadium in Central Park Drive is due for completion in 2004.

Chris was a local business owner and resident of Waiatarua for twenty years. During this time he supported his community as a Waitakere City Council Community Board member and a Residents and Ratepayers committee member.

He is survived by his wife Susanne.

WAIATARUA RATEPAYERS & RESIDENTS ASSOCIATION

### EDITOR:

Robin Essex - Ph 814 1850  
E-Mail: robsx@free.net.nz

### WRRRA President:

Dave Pocock - Ph 814 9697  
E-Mail: pocock@wave.co.nz

### WEB Site:

www.waiatarua.org.nz

## Africa - part two

Jo tells me I'm too long winded, so I'll try to shorten a very long story.

After the spectacular sand dunes we headed off at 5.30am for Swakopmund. Driving through very dry and barren countryside of crushed rock and boulders we spotted ostrich and springbok. Swakopmund is a seaside town and on approach we saw a mass of pink in the water – flamingos...big flocks of them, which was quite an impressive sight. This stop was memorable for two reasons: firstly it was my birthday with a surprise dinner and secondly, we visited a black township where the 'lucky ones' live in two-room concrete houses with long-drop toilets. Strangely enough, they do have electricity and water! The unlucky ones live in houses made of rubbish material like corrugated iron, cardboard and old plywood, floors of dirt, no running water and no power. We had a traditional meal at one house which consisted of Osthima (maize dough), Omalou (homemade beer), Ekaka (wild spinach), Omagunga (mopane worms) and Omakunde (beans). All were quite palatable, except that awful beer. These people have nothing but the real basics yet they are all happy. The kids are out playing and laughing, not a computer or play station in sight. Another paradox is the cleanliness. Their houses and they are spotless.

On the way to Khorixas we visited the rock paintings/engravings and a petrified forest (260-280 million-years-old), both of which are interesting. We were really in the outback at this stage, passing through little country settlements, animal sightings becoming more frequent.

Next it was off to Etosha National Park, and as we travelled the vegetation became thicker. We saw how the locals take on different characteristics from tribe to tribe. At Etosha (the great white place of dry water) we stopped at water holes where we saw impala, springbok, zebra, wildebeest, kudu, ostrich, and giraffe. Overhead circled eagles and bustards. After dinner, back at the floodlit waterhole, were a family of elephants and a rhino arriving for a drink. During this visit we saw the African wildcat which apparently is a rare occurrence.

Off to Windhoek, capital of Namibia, and like other large mainly white areas all the properties have high fences topped with barbed wire or broken glass, leftovers from Apartheid. We dined at a place called Joe's Beer House, done out like a large grass hut. Here we feasted on a kebab of ostrich, croc, zebra, kudu and chicken. It was DELICIOUS and only \$60 (NZ) for both of us, including dessert and wine.

Early next morning we headed for Buttepos, only to break down 4min later.

Crisis over and eventually on our way again we soaked up visions of baboons and yellow hornbill at the roadside as well as zebra and springbok, which are everywhere. At Buttepos we stayed on a private game park before crossing to Botswana. By the way, Buttepos means 'border post', which I discovered to the amusement of the locals when I asked, "How far to town?"

At Botswana border it was getting hotter. The altitude is higher here and I nearly passed out in the border patrol office, but a gallon of water later I was fine. There's a thing going down about people bringing meat into the country and every so often agriculture officers have roadblocks to carry out inspections. We saw some cars being totally emptied.

Along the way at different stops the natives have stalls selling local artefacts, all displaying the same thing and competing for dollars (even the children).

The countryside changed again - very few trees, mainly dry grasslands. The birds take over the trees and build huge nests where hundreds of them live as if in apartment blocks.

The next town was Maun where unlike city areas shacks and fancy houses are all intermingled. Goats and other livestock wander down the main street!

Wednesday morning heralded a 3-day / 2-night highlight as we flew by six-seater Cessna into the Okavanga, landing on a piece of island in the middle of the Delta. This place is unreal in that the bar is built into a cave offering self-help drinks, voluntarily recorded in a book and paid at the end. Accommodation is a permanent tent on a wooden platform, complete with king size bed. Our tent was right on the edge of the Delta and we were able to watch the animals feeding right there. In fact at 3 o'clock one morning we had two hippos feeding about ten metres away, and each night elephants came into the camp after food. Transport around the Delta was by dug-out-type canoe and from there we went on walking safaris which were amazing, with the wild animals sometimes only metres away.

We had close encounters with various monkeys and baboons, elephants, zebras, warthogs (only a warthog could love a warthog - they're ugly) and wildebeest; then a long distance sighting of a leopard, plus a multitude of birds. Our next adventure was to float in a little canoe amongst sleeping hippos. All we could see were pairs of eyes above the water. Believe me, you are very careful not to rock the boat in a situation like this! We were sorry to leave here as we still hadn't seen a lion.

Off to the Chobe River we headed for an evening cruise, stopping to look at the 4000-year-old Baobab trees (upside-down tree). The weather was really hot and sticky so no trouble drinking eight glasses of water a day. The cruise was an open boat with canopy roof, powered by two outboards - very pleasant...and here we saw water buffalo,



elephants, giraffes, crocodiles but still no lions.

Sunday morning brought our last 'game drive', this time in an open-sided land rover. It turned out to be our best yet, getting within six or so metres of elephants, water buffalo and finally lions. First there was Mum just walking along, then two half-grown cubs playing tug-of-war with an elephant's foot and lastly Dad resting with a huge bulging stomach, spread on the ground obviously full of elephant meat. We could now leave happy.

We were next off to Zambia and Victoria Falls which required a river crossing, and in typical African fashion this was just a barge capable of taking two cars and a truck. On arrival, we were forced to wait for 'lunch break' to pass before boarding. There was a man controlling the loading, which had nothing to do with order of arrival. Commercial trucks were last on, some waiting two or three days to get across and all this in the middle of nowhere. We were lucky and about an hour later were on our way to another border, another country and on to Livingstone.

For our last African Safari night we enjoyed one more river cruise, this time on the Zambezi River with a BBQ on board.

Our final morning with the group took us to Victoria Falls where we spent two hours drifting around and viewing the spectacular scenery. I couldn't help but wonder why a country too dry to grow crops has all this water falling over a cliff?

Our only remaining stop was a visit to the inevitable market for last minute bargains. This was an experience I'd recommend to anyone!

Shirley and I went on to Mozambique for five days, but that is another story. Maybe

- Dave Pocock

## Fire Brigade

We welcome Andy Holyer to our team, and welcome back Richard Seccombe. Congratulations are due to Aaron Offenbaker on his promotion to Senior Firefighter.

The Fire Station will have an Open Day on Anzac Day - Sunday 25th April from noon until 4 pm. You can meet us all, look over the gear, check out our new training area, pick up home safety info - or just be nosy.

We've had a busy month with off-station training courses. Five of us attended a Realistic Interior Fire Training course at Rotorua and seven spent a very full weekend at this year's Field Camp at Whangaparaoa Army Base, where crews went through a number of very realistic fire and rescue scenarios. Karl Nuttall and Aaron Offenbaker had a two-day Hazardous Materials course, and Kevin Healy completed his Emergency Response Driver course over 2 weekends.

## Winter Calling...

The change in the weather suggests that it's time to prepare for winter. Cleaning your chimney or flue is undoubtedly a good idea - but it may also be a condition of your insurance policy! It's also a good time to get your electric blankets checked.

## Recent Calls

### March

6:22 pm, Thu 18th - False alarm, Seaview Rd, Piha.

5:50 pm, Fri 26th - Car rolled, Piha Rd. No injuries.

### April

4:01 pm, Sun 4th - Long drop toilet on fire, Marine Parade, Piha. True! En route we indulged in great speculation about spontaneous combustion, hot curries and the dangers of smoking in the loo. But we'll never know - we were only half way there when Piha Brigade turned us back after putting it out.

## Contacts

Always dial 111 for any fire or other emergency. For inquiries please phone Ian Ford (814 8871), Helen Longley (814 9855) or Karl Nuttall (814 8777)

## The Arataki Rangers Roundup

The Nursery is absolutely full of plants at the moment. Planting season is approaching. Efforts will be made over the next two months to prepare many sites across the Waitakeres for our precious plants to be put in the ground for revegetation.

Tracks have been a priority lately. The Incline/Pipeline/Slip

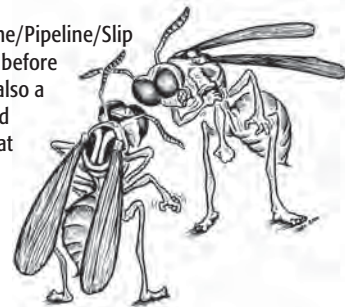
Track circuit is well worth a walk at present before the winter rains set in. Clarks Bush walk is also a

good choice. There are many wasps around currently! The Arataki crew has got rid of at least six nests and there are more about.

Beware of wasps whilst in the park. If you see a nest please contact us so we can deal with it before anyone is stung. Wasps should start to reduce their activity over the next month.

If you are interested in volunteering or have any other queries please feel welcome to call us on 817-0099. Ka Kite

- Arataki Rangers



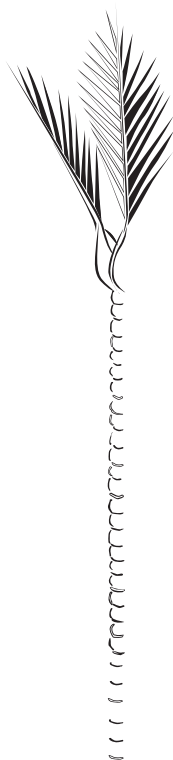
**Kelston Girls & Boys High Schools** will be holding a combined 50th Jubilee! 22nd October to 24th October, 2004 (Labour Weekend).

For details visit [www.kbhs.school.nz](http://www.kbhs.school.nz) or Phone: 827 6063 or Fax: 827 3996

# Waiatarua Ratepayers and Residents Association

## INFORMATION SHEET

Place your  
fridge magnet  
here



### Committee 2004

Name	Phone #	Fax #	E-mail	Area of responsibility
Dave Pocock	814 9697	814 9697	pocock@wave.co.nz	President. Community Board
Wayne Maguire	814 1964		wfmaguire@xtra.co.nz	Vice President, Hall
Tony Bacon	814 9860	814 9140	tony.bacon@sthw.co.nz	Immediate Past President
Rod Maunder	814 1831	814 1831	rodmaunder@yahoo.co.uk	Treasurer
Pauline Isaachsen	814 9847			Hall Custodian
Frank Hogsden	814 9869			
Jeannette Ziesler	814 1999		jawz@clear.net.nz	Library, A.R.C. Pest Liaison
Royston Steer	814 9436		twickers@xtra.co.nz	Environment
Lyndsay Whittle	814 9872	814 9088	lyndsay.whittle@xtra.co.nz	Drama Group, Historian
Robin Essex	814 1850	814 1855	robsx@free.net.nz	Newsletter Editor
Korstiaan Prins	814 1850	814 1855	korprins@xtra.co.nz	Newsletter, Web Site
Molly Whittington	814 9034	814 9034	mollymat@actrix.co.nz	
Mike Loughran	838 8517		mike.loughran@epmu.org.nz	
Les Duffield	814 1130		lesjudj@xtra.co.nz	

### Representatives

Ian Ford	814 8871		ian.ford@xtra.co.nz	Web Site, Representing the Fire Brigade
Catherine Wells	814 8871		cathie@maxnet.co.nz	WEB Master

### WARRA COMMITTEE MEETINGS

are held every second Wednesday of the month at 7.30pm in the Waiatarua Community Hall at 911 West Coast Road. WEB Site [www.waiatarua.org.nz](http://www.waiatarua.org.nz)

### NEWS LETTER

Deadline: Copy to the editor by the second Wed. of each month.  
Editor: Robin Essex 13 Bendalls Lane Phone 814 1850 Fax 814 1855  
Delivery: Last week of each month  
Distribution: Concerns or queries to Tony on 814 9860

### WAIATARUA WEB SITE

[www.waiatarua.org.nz](http://www.waiatarua.org.nz)  
WEB Masters Catherine Wells E-mail [cathie@maxnet.co.nz](mailto:cathie@maxnet.co.nz)  
Korstiaan Prins E-mail [korprins@xtra.co.nz](mailto:korprins@xtra.co.nz)

### WAIATARUA FIRE BRIGADE

Phone 111 for fires and other emergencies  
Telephone: Ian Ford 814 8871, Helen Longley 814 9855  
Karl Nuttall 814 8777

### WAIATARUA PLAYCENTRE

Hours: Monday, Wednesday, Friday 9.30am - 12.30pm  
Telephone: 814 8835, After hours Jenny 814 9954

### WAIATARUA ENVIRONMENTAL ISSUES

Telephone: Caroline Murdoch 814 9629, Royston Steer 814 9436

### WAIATARUA COMMUNITY LIBRARY

911 West Coast Road  
Library Telephone 814 9353 or Jeannette Ziesler 814 1999

### WAIATARUA GARDEN GROUP

First Wednesday each month  
Telephone: Eileen Powell 814 9298

### ARATAKI RANGERS

Arataki Rangers Station Telephone: 817 0099

### ARATAKI VISITORS CENTRE

Scenic Drive, Waitakere Ranges, Telephone: 817 0077

### WAIATARUA PEST AND WEED INFORMATION

Telephone: Jeannette Ziesler 814 1999 E-mail [jawz@clear.net.nz](mailto:jawz@clear.net.nz)

### NEIGHBOURHOOD SUPPORT

Mary Kelly, JP 3 Atarua Gardens 814-9857 [turtle@xtra.co.nz](mailto:turtle@xtra.co.nz)  
Denis Graham Atarua Gdns 814-9706  
Ross & Kath Mullins 330 Forest Hill Road 814-9402+Fax  
Jenny McGee 886 West Coast Road 814-9954  
Margaret/Paddy Marshall 19 Raroa Terrace 814-9859

### WAITAKERE CITY COUNCIL

Offices Telephone 836 8000  
Customer Services Telephone: 839 0400 (24 hour servc line - Use this phone number for all animal welfare, noise, stormwater etc.)

### WAITAKERE COMMUNITY BOARD

Contact: Kevin Healy Telephone 814 9505,  
E-mail [Kevin.Healy@waitakere.govt.nz](mailto:Kevin.Healy@waitakere.govt.nz)

### WAITAKERE CITY COUNCILLORS

Penny Hulse Tel. 832 5358, E-mail [penny.hulse@waitakere.govt.nz](mailto:penny.hulse@waitakere.govt.nz)  
Carolynne Stone Tel. 818 8057, E-mail [carolynne.stone@waitakere.govt.nz](mailto:carolynne.stone@waitakere.govt.nz)  
Denise Yates Tel. 811 8770 E-mail [denise.yates@waitakere.govt.nz](mailto:denise.yates@waitakere.govt.nz)

### THE FAIRY FLOWER SHOP

Flowers with style - Weddings -  
Corporate functions - Gifts & Gift Baskets  
Telephone 817 3780 - Fax 817 3742  
423 Titirangi Road, titirangi



Please support our Waiatarua News sponsor

### Longley Printing Co Ltd

For all your printing needs including: Offset, Letterpress, Hot foil stamping, Typesetting, Photocopying  
29 Bruce McLaren Road, Henderson phone 837 0729 E-mail [print@longley.co.nz](mailto:print@longley.co.nz)

# Notice Board

Notices are free to financial members 2004, January to December. A list of financial members is available at the library, and any queries about membership can be answered by phoning the treasurer - Rod Maunder on 814 1831

Repeat commercial advertisements of members will only be printed as space allows.

**8-WEEK INTRODUCTION TO ACTING COURSE:** with tutor John Goudge at his studio at 4 Rimu Road, Oratia. Tuesday 7.30 - 9.30pm, 4 May - 22 June - a fun way for adults to develop acting craft & break down barriers. Fee \$ 95.00. To enrol phone John on 814 9744

**BABYSITTER:** mature, honest and reliable lady. Experienced. \$10 per hour. Phone Juliette on 0274-875-805.

**BED AND BREAKFAST - ATARUA GARDENS:** no room for your out of town visitors? Contact Carol and Denis. Phone 09 814 9706 or 025 283 7544

**BIKE:** Ladies geared Milazo Adventurer. Hardly used \$ 100.00 Phone Abby 814 1850

**BREASTFEEDING SUPPORT AND INFORMATION:** please call your local La Leche League leader, Adith on 818-7728.

**CAR:** 1989 white Daihatsu Charade. Goes well. P/St, elec. windows, manual five speed. Current wof and reg. \$1500.00 ono. Call Helen 814 9963 or 839 0000 ext. 6031

**COACH - Lucy Reade, Life Coach:** for individuals, families and groups. Teens, wondering what to do when you leave school? Parents, what now that the kids are off to school? Small Business owner, where are you heading? - Phone 818-2727, email [lucy@lucyreade.co.nz](mailto:lucy@lucyreade.co.nz)

**CREAM FOR JOINTS, MUSCLES, BRUISES:** essential oils and all natural ingredients. Phone 814-1868.

**EXERCISE MACHINE:** Cardiolyder \$50.00 Phone Robin 814-1850.

**JP - MARY KELLY:** for all personalised weddings, re-affirmation of wedding vows, ceremonies of commitment, naming ceremonies, MC, Chair for public meetings etc. Phone/Fax 814-9857.

**LANDSCAPER:** for experienced, professional landscaping services (including paving, concrete, retainer walls, fences, decks, gardens/plants, water features) at a competitive price, contact Bevan on 837-1992 or 021-375 707 or at [totaland@ihug.co.nz](mailto:totaland@ihug.co.nz)

**LAWN MOWING:** Local reliable. Phone Eric 837 2333.

**LOCAL ISSUES:** Kevin Healy, Waitakere Community Board email: [kevin@healy.co.nz](mailto:kevin@healy.co.nz) or Phone 814-9505

**LODGE - AUCKLAND'S WAITAKERE PARK LODGE:** open Thursday to Sunday for lunch and dinner. Now open for Sunday brunch from 10am. Enjoy the log fires in our luxury lounge bar, magnificent views and dining on the deck. Phone 814-9622.

**"MARVELLOUS MOSAICS":** 2 day workshop @ Titirangi Community Centre. An ancient art form where there is a revival - easy to learn & fun. DATES: 2 x Sundays May 23, June 13th. TIME: 9.30 - 5.00pm. Call Diane @ Titirangi Community Centre to register, 817 7448. COST: \$65.00 Call Helen, tutor, for a materials list. 814 9963

**MASSAGE - LIFESTYLES MESSAGE THERAPY:** providing therapeutic, sports and relaxation massage in a safe, professional environment. Phone Doug Maynard on 814-8981 or 021-543-302.

**NATUROPATH - "HEALTHWISE":** your local Naturopathic Clinic at Waiatarua Phone 814-8881. For menstrual, digestive problems, low energy, frequent colds and flu etc.

**PLANTS:** taros, bulbs, cannas and various perennials for sale. \$1 - \$3. Also some shrubs. All sales for charity. Phone Margaret 814-9859.

**PROPERTY SALES:** looking to buy or sell? For best results and free advice please phone John on 0274-122-853. Bayleys Titirangi.

**REAL ESTATE:** here providing a local service. Selling or Buying phone Wayne on 814-1964 or 0274-223377 (Harveys-Titirangi Real Estate Ltd MREINZ Phone 817-8011)

**ROOFING AND SPOUTING:** free advice, consultation and inspections, 28 years experience. Quality new and reroofs, repairs, spouting etc. Onduline organic and non polluting roofing, gutter leaf protection Ph Mark 812-8337 or 025-958-058.

**SECURITY: FIRST CITY CARE SECURITY SERVICES.** For all your security requirements. Ph Greg on 814-9954. Mobile 021-356-066. Email [gregmcege@firstcitycare.co.nz](mailto:gregmcege@firstcitycare.co.nz) Website [www.firstcitycare.co.nz](http://www.firstcitycare.co.nz)

**THE NIKAU CLUB:** Bar, Café, Restaurant. New winter hours. Open weekdays 12 noon until after dinner for lunches and dinner. (except closed Mondays at 4.00pm). Open weekends 10.00am until late, for breakfast, lunch or dinner. Phone 814-1919.

**THERAPIST/COUNSELLOR:** Marguerite Laing BSP. Reducing the effect of conflict, stress, eating disorders, communication difficulties; and liberating energy to bring serenity and clarity. Phone 814-9889.

**TOYS - FABULOUS WOODEN TOYS:** have a look at our website [www.creativetoy.co.nz](http://www.creativetoy.co.nz) for amazing wooden toys imported from Germany and Switzerland. Free delivery in Waiatarua! Phone 814-9903

**TREWORK:** fully insured and qualified arborists. Phone Joe Krazz 021 244-8733.

**VET - WEST COAST VET CLINIC:** offering full veterinary service for your pets. **24 hour service** Phone 818 4104

**WATER SERVICES LTD.:** pump sales and service. Tank repairs, cleaning and new tanks installed. Filtration and water treatment. Phone Phillip on 812-8537 or 027-279-6036.

**WEST COAST WATER:** for all water deliveries phone Patrick on 812-8079 or 027-288-9111.

**WINE AND FOOD MARKET - ELKE'S:** open every Saturday morning for fresh Pandoro and German Rye Breads, organic cheeses, german meats, Q-garden pickles and chutneys, chocolates and more. Also a great selection of Siebel wines, Port and Mead at cellar door prices. Tastings available. Open Saturday 10am - 2pm at 113 Sturges Road, Henderson.

**YOGA - FAY'S CLASS:** for true fitness and relaxation Ph 837-7794



ROSE HELLABY HOUSE RE-OPENS

Rose Hellaby House on Scenic Drive is a great place to take your visitors for truly spectacular views of Auckland. Managed jointly by West Auckland Historical Society and Auckland Regional Council, brand new resident caretakers have opened the doors of the home itself and are keen to show people around this hidden treasure of days gone by. Hours 11am to 5pm weekends only.

## U3A - University Of The 3rd Age

University? Please don't shudder. It's only an idea I throw into your busy lives... Take a small group of locals, interested in meeting (monthly perhaps) to exchange knowledge on topics they are collectively keen on learning about, and you have a 'U3A Waiatarua'!

There are Auckland groups with President, Vice-President, Secretary, Treasurer, Course Co-ordinator etc., Mini Speaker and Guest Speaker. They have 2-hourly sessions, and sometimes also outings.

Our modest study group could meet in members' homes or at the Waiatarua Community Hall.

I'm sure there must be many residents quietly tucked away in the bush who would love to share their passion for a particular subject by telling the group about it, maybe taking up two sessions.

Any suggestions?

Anyone keen to be Co-ordinator for an initial get-together?

- Shirley Tomlinson, Phone: 814 8938

## WAIATARUA COMMUNITY LIBRARY

911 West Coast Road, under the Community Centre. Phone 814-9353

### Hours of Opening



Thursday	10.00am - 12.00pm
Friday	7.00pm - 8.00pm
Saturday	11.00am - 12.00pm
Sunday	11.00am - 12.00pm

## Neighbourhood Support

The names of our current co-ordinators are listed below. If you haven't been approached yet and would like to belong to one of these groups, give the co-ordinator a call.

NAME	ADDRESS	PH/FAX	E-MAIL
Mary Kelly, JP	3 Atarua Gardens	814-9857 +Fax	<a href="mailto:turtle@xtra.co.nz">turtle@xtra.co.nz</a>
Denis Graham	Back up - Atarua Gdns	814-9706	
Ross & Kath Mullins	330 Forest Hill Road	814-9402 +Fax	
Jenny McGee	886 West Coast Road	814-9954	
Margaret/Paddy Marshall	19 Raraa Terrace	814-9859	

## Waiatarua Community Hall Hire

Hire this excellent facility for your meetings, parties, dances, birthdays (children and adults) etc. Lovely wooden floor for dancing.

(including tables and chairs)

Friday and Saturday evenings = **\$100.00**

Sunday to Thursday evenings = **\$65.00**

Other times by arrangement • Discounts for regular users  
Community Barbecue hire **\$20.00** • Crockery hire **\$25.00**

Phone Wayne Mcguire on 814 1964

## A Bit of Local Waiatarua History:

Shortly after the completion of the Waiatarua Community Centre in the early 1970s a group of locals formed the Waiatarua Drama Group. Resident and handyman of the time, Mike Perkins, designed and put together an ingenious system of "flats" which could be easily joined together, providing an almost instantaneous theatre set. To complete the job of creating a working theatre he ran some wiring through the ceiling and connected that to a lighting box, easily disassembled and put away after the show. A director was appointed, scripts were hired or written and rehearsals were soon under way. It wasn't very long before the posteriors of up to a hundred enthralled theatre goers graced the seats of the auditorium, packing out the house night after night.

At a time in New Zealand's history when Disco ruled and going to the theatre just wasn't the "cool" thing to do, little old Waiatarua was making its mark on Auckland's entertainment scene. Perhaps it wasn't so much the quality of the productions but more the appeal of Phyl Vincent's home made goodies at interval that created so much of a following. A full dinner masquerading as a half time snack was served to patrons on what appeared to be Phyl's best crockery, complete with proper knives and forks - all of which were washed up by a band of willing volunteers, long after the auditorium was cleared and the last patron had made their way down the hill. Of course the food and copious amounts of locally produced wine were an all inclusive part of the package... about four dollars-a-head as I recall.

At the height of its popularity, in the mid 1980's, the group banded together and built a 'home base' in the form of a double garage, with a loft, at the bottom of the car park (next to where the Play Centre now stands). This they affectionately named "Badgers" as the building was completed just at the beginning of rehearsals for a production of *Wind in the Willows*. Currently, it is filled with theatre props and general paraphernalia. Change being the only constant, most of the movers and shakers in the group progressed on to greener pastures, leaving the Waiatarua Theatre (as it was latterly named) to gradually fall into a state of disuse.

Enter a colourful character by the name of Tony Holt who was neither an actor nor a theatre buff! Tony was a long-time member of the Waiatarua Volunteer Fire Brigade and initiator of neighbourhood watch groups, not to mention countless other activities in Waiatarua. One day when a few fire brigade members were out for a run, Tony announced to our astonishment that he was going to write a play about a fire brigade. The story would be set in the 1950's. When questioned about who he was going to get to act in this play he simply told us that we were going to do the job. That was back in 1995. The first performance of "Phone 1125-J" (a short and three longs) was performed to a packed house on a rainy night in April 1996. The home-made cooking and genuine crockery had been replaced with good old Kiwi fish and chips, carefully wrapped in 1958 newspaper. The food was purchased from a takeaway in Henderson and swiftly transported to the hall, just in time for interval.

The "Double One Two Five - Jay" series continued until 1998 and was eventually made into a film, *Isaiah's Fire*. Sadly, Tony quickly became ill and died in January 2000. Fortunately, another brigade member carried on the tradition and wrote a third play in the series. This instalment was performed in 2002. Once again however people have moved on, leaving Waiatarua pining for an effective theatre group.

The hardware is still intact and there is even a substantial amount of money in the bank. All the hall is waiting for is a bunch of eager and talented (or even not so talented) Waiataruans to step up to the plate and provide the rest of us with some local entertainment.

Interested thespians or artisans should phone **Lyndsay on 814 9872** for further information

## BRICKBATS AND BOUQUETS

Sponsored by the Fairy FlowerShop, 423 Titirangi Rd Titirangi Phone 817 3780



This month's **bouquet** is awarded to Jo Hall, our retiring editor. What a wonderful effort over the past four years or so! A special thanks Jo, for 'battling on' to meet deadlines for the last newsletter whilst playing nursemaid to your injured husband.

A **brickbat** to the person who threw a live cigarette butt out of their car window on West Coast Rd. It set alight roadside pine needles just a few feet from a large bank of dry gorse. Hats off to the van driver who stopped to extinguish a fool's carelessness.

## Walk of the Month

This month's feature walk is the Mercer Bay Loop. It starts from the end of Te ahu Road off the Piha Road. It's a magnificent trail of an easy grade, suitable for most abilities, and takes about 50 minutes return. Along the way some incredible cliff top views can be seen as well as interesting coastal forest areas. A definite 'must do' walk in the Waitakere Ranges.

- Jonathan Gould



## From the President

Hi!

I'm back again... this time with my first official report which, because of printing deadlines and change of meeting dates, covers two committee meetings.

Our meetings are now the second Wednesday of each month at 7.30pm in the Waiatarua Community Hall. Feel free to come along and if there is a matter you would like to raise, please contact one of us.

Our first meeting was a positive, productive exercise with all members keen to get going. A list of members and their areas of responsibility appears within.

If you are one of the many who dread the thought of being on a committee but would be willing to help in a working party please contact the person handling the subject that appeals. Alternatively, contact any of us if there is another area of interest.

There are reports from individual committee members on various activities since our meeting. I myself, and others have attended extra meetings since. The main points from these are Roadwatch: we are submitting a proposal to L.T.S.A for improved signage. Also, did you know if there is some road maintenance required (such as potholes) you can phone W.C.C call centre on 839 0400 to report it? If any one does this we would be interested in the result. Council now has more input into local speed zones too, which has to be a step in the right direction.

A.R.C Draft Annual Plan is out and the main point for us here is the inevitable rate increase. Although we still retain a rural dispensation, we are going to pay a higher percentage than last year. Council's Annual Plan submission period is from April 13th to May 13th 2004.

It has been brought to my attention by a concerned resident that the fire ban season is not always adhered to, especially by 'out of area' house-owners. If you have a rental property near you and the tenants or landlord light fires, please politely inform them of the rules.

We are looking into 'fire ban season' signs being installed on West Coast and Forest Hill Roads. By the way, the fire ban ends at the end of April.

Till next time.

- Dave Pocock

## From the Editor

Greetings, Robin here. Perhaps in an attempt to fill Josephine's shoes I should introduce myself as the new editor of this newsletter.

My partner Korstiaan and I have lived in the area just over a year now, although I am a 'Westie' from way back. We have built a new home in the bush, which is currently packed to the gunnels with young students claiming to be related to us.

I work for WDH, in mental health, and previously did some freelance journalism for a small community newspaper. For this my training was by correspondence through The Writing School in Wellington.

I'm very excited to be back working with words, so hopefully I can deliver accordingly, supported by Korstiaan on the layout and of course Grant and Carol at Longley Printing.

A big thank you also to Tony Bacon and his band of volunteers who happily deliver this wee paper to us all every month, rain or shine

Looking forward to sharing ideas etc. with you all and gradually having the opportunity of putting faces to names.

## Freebies For The Asking

There is help and advice available to enhance and extend our fantastic native flora and fauna. The Waitakere City Council has many ways to assist you:

- Free management plan.
- free weedbin per property each year. These are huge and need to be placed off the road for safety reasons. The bin must be filled with "approved weeds" only, not other rubbish. Get together with a few neighbours with weedy problems.
- 2 free ginger bags each year for tubers and flower/seed heads only. Great if you have a minor ginger problem. Put out with the weekly rubbish.
- Up to \$300.00 rebate if you employ a contractor. Weed Free Waitakere Trust are great. Phone them on 826 4276.
- Free Escort spray. It comes in large amounts, so get together with the neighbours again. Remember inexperience can also kill native plants. Get advice. Escort can also be painted on instead of sprayed.
- Some funding is available to assist with fencing streams and bush patches from stock.
- Free eco-sourced plants to replace the weeds.
- Many leaflets for advice and information on how to apply for bins, spray, funding and plants.

All the above is generously available through the Green Network. Call the Waitakere City Call Centre on 839-0400 or the Parks and Community Projects Co-ordinator: Jacki Byrd, phone 836-8000 ext 8707 mobile 025-718 897 email jacki.byrd@waitakere.govt.nz

Free untreated sawdust for weed suppressant mulching from:

- Whitecliffs New Lynn Phone 8276047
- Alloy Yachts – trailer loads phone 838 7350, 361 West Coast Road phone 818 6893
- Molloy Furniture View Road phone 8387966 – a huge truckload, free delivery.
- Great eco-sourced plants and planting advice from, our own Oratia Native Plant Nursery phone 818 6467

- Reprint for your information from September 2003

## Waiaatarua Rainfall (March 2004)

A welcome respite after February's deluge

	Rain Days	Wettest Day	March Total	Year to Date
Mountain Road	9	3rd (10 mm)	32 mm	450 mm
Brabant Road	11	2nd (10 mm)	31 mm	499 mm
Quins Road	12	18th (6 mm)	23 mm	419 mm
Forest Hill Road	5	2nd (12 mm)	24 mm	456 mm
Auckland City			9 mm	351 mm

**INORGANIC COLLECTION WEEK:** 11th - 14th of May 2004. A good opportunity for a cleanup. Let's not create an eyesore by putting our rubbish out too early though. (Ed.)

**WANTED:** Contractor for cleaning and hire arrangements of the Waiaatarua Community Hall. For more information phone Wayne Mcguire on 814-1964 or 0274-223377

**MINUTE TAKER REQUIRED:** Duties - take minutes of monthly meetings, type minutes and email to committee members. No other committee involvement required. Interested? Contact Wayne Mcguire on 814-1964 or 0274-223377

Have you been to the **Waiaatarua Community Hall** lately? Consider the possibility of regular community social events to keep us in touch with each other, perhaps even on a monthly basis (e.g. quiz/game nights, jumble sales, film evenings, debates, dances etc.). If you have any ideas or wish to be involved in an organising group please fell free to contact Dave Pocock on 814 9697 or Wayne Mcguire on 814-1964

### Please accept my Membership to the Waiaatarua Ratepayers and Residents Association

2004

- I enclose: \$10.00 household, \$5.00 Single Occupant  
 I would like a copy of the book "Song of Two Waters" @ \$20.00 (delivered)

Name .....

Address .....

Phone .....

E-mail .....

#### To Treasurer

Waiaatarua Ratepayers and Residents Association  
 911 West Coast Road, Waiaatarua, Waitakere City or **leave at the library**  
 WEB Site [www.waiaatarua.org.nz](http://www.waiaatarua.org.nz)

## Native Herbs in Waiaatarua

**Ti Kouka**, more commonly known as the cabbage tree, is well known for its beauty but also has medicinal qualities. It may be used for inflammatory skin conditions (particularly dry eczema) - the seeds being especially beneficial due to their high quantities of linoleic acid.

The Ti Kouka can be used for both diarrhoea and constipation, the soothing qualities easing the inflammation in diarrhoea and the leaves acting as a bulking agent in constipation. These properties make it useful in Irritable Bowel Syndrome.

This lovely tree is also a blood cleanser, stimulates the immune system and may be a liver tonic - detoxifying and regenerating the liver cells. To use decoct ten fresh leaves in two cups of water for 20-40 minutes.



By Sonja Cartwright - Naturopath, Registered Medical Herbalist.

## GARDEN GROUP

Our May visit will be to 'Bonsaiville' at 41 Taumata Rd, Mt Albert. This is an informal Japanese-style bonsai garden specialising in trees, the oldest of which is 100 years. Many of the bonsai are native species. The garden also features a waterfall, a green tea hedge and a stone garden. The entry fee is \$5 which includes afternoon tea, and we meet at 1 pm Wednesday 5 May.

**Ring Eileen on 814 9298 for further info**, or if you need or can offer a ride.

Our June or July get-together will include a native plant swap. We are looking for unusual plants, so be on the lookout as you trawl the garden centres.

## What is the Waitakere Community Board?

- by Kevin Healy

The Waitakere Community Board consists of six elected Community Board members, plus our three ward Councillors, who are appointed to the Board.

The general purposes of a Community Board are:

- Overview of road works, water supply, sewerage, stormwater drainage, parks, recreational facilities, community activities, and traffic management within the community.

- Preparation of an Annual Plan submission.

- Communication with community organisations and special interest groups within the community.

As well, individual members of the Board are responsible for representing and acting as advocates for the interests of the Community.

The Waitakere Community Board meets on the first Tuesday of the month, 7:00pm at the Council chambers. Members of the public are welcome to attend, and may raise any issues within the Board's scope during the Public Forum session at the start of the meeting.

Your local Community Board member is Waiaatarua resident Kevin Healy. Kevin can be contacted by phone: 814 9505, fax: 814 9507, or email: [kevin@healy.co.nz](mailto:kevin@healy.co.nz).

### Waitakere Community Board members are:

Christine Shepherd (Chairperson)	836 3239
Diane Goodley	818 9201
David Hallett	838 5657
Betty Hanson	812 8681
Kevin Healy	814 9505
Robin Taylor	812 8506

### And City Councillors are:

Penny Hulse	832 5358
Carolynne Stone	818 8057
Denise Yates	811 8770

## MAY NEWSLETTER

Copy needs to be in the hands of The Editor,  
 by **WEDNESDAY 12th MAY, 2004**

Robin Essex, 13 Bendalls Lane, Waiaatarua. Phone 814 1850 - Fax 814 1855  
 E-MAIL: [robsx@free.net.nz](mailto:robsx@free.net.nz)

Opinions expressed in this newsletter are not necessarily those of the Editor or the Waiaatarua Ratepayers and Residents Association.

Our thanks to Longley Printing for their continuing support in printing this newsletter