



Community News

OCTOBER/NOVEMBER 2001
EDITOR:
JOSEPHINE HALL
WRRRA PRESIDENT:
GEOFF WOOD PH 836-8630

This Month at WRRRA

*Arwen Kencalo was co-opted to the WRRRA committee. Arwen has taken a keen interest in, and has been working with others from the committee, to develop the WRRRA website. (waiatarua.org.nz)

Pages from the website were presented at the meeting for approval.

*Two designs of a new logo/letterhead for WRRRA were also presented to the meeting. The new design incorporating the Nikau Palm and our website address. Thanks to Cathie Wells for this work.

*There was much time, yet again, spent discussing the pro's and con's of the formation and use of Structure Plans in Waitakere City. See Terry Chapman's article for further information.

*The WRRRA has received a grant of \$2000 from the Waitakere City Council to go towards the general maintenance of our Waiaatarua Hall.

Fundraising for the upgrading of our hall was also discussed – see Geoff Wood's article following.

*Hall decoration. It's decision time. At our next monthly meeting we will all be coming armed with swatches of curtain fabric and prices, examples of stackable chairs and tables, and quotes for new heating in the hall. Expect to see changes.

*Time was also spent organising our next social event. It is breakfast time for Waiaataruan's. On Sunday 28th October 9am in the Waiaatarua hall. There is a limited supply of tickets and no door sales, so contact Eileen Powell on 814-9298 or Jo on 814-9945. The last community breakfast we had was a great success, so be in quick for your tickets.

**Community
Breakfast**
at the Waiaatarua Community Hall
on
SUNDAY 28th OCTOBER 2001
at 9.00 am
Adults \$7.00
Children (under 12) \$4.00
NO DOOR SALES

Funds Needed for the WRRRA

by Geoff Wood

Funds are continually needed to continue the activities of the Association by your committee.

Our local hall is needing an internal spruce up which will take quite a sizeable capital sum and dip heavily into our reserves. Every year we seek from the Council Community Hall Funds a grant and we are grateful for the \$1,000 to \$3,000 we receive. This however is not intended to cover any of the Association's administration costs such as stationery, postage, newsletters and hall operating expenses.

If we can collect extra money it will mean we can make the hall increasingly attractive for hire. We would like to have the hall used more frequently and recommend it to the public as a desirable venue for groups and functions.

It is also important that you show your support by paying, and renewing your membership fee to the Association. Currently less than 25% of potential members in the area join up! Are you able to help by sending your cheque NOW? (see the back page for details)

Election Meeting

by Geoff Wood

This meeting took place on Thursday 20 September in the Hall. About 20 residents from Waiaatarua came along which was apparently a greater number than all the previous 3 meeting attendances put together! We heard that some later meetings also had good numbers.

We invited all Mayoral, Council and Community Board candidates to speak

for 3 minutes and left time for questions afterwards. The 15 or so candidates generally said the meeting went very well. We, for our part always enjoy having the various local body members visit to exchange ideas and hear our concerns.

On a personal note, thanks to Eileen, for putting up the signs for the meeting, and for arranging supper. Terry also did a fine job at timekeeping and fielding the questions at the end.

More on Structure Plans

by Terry Chapman

The WRRRA committee has spent a lot of time over the past few months looking at the concept of Structure Plans, trying to decide if they are a 'good thing'. The topic is not an easy one to come to grips with, and we have had presentations on separate occasions from various people including Carolynne Stone (for) and Wade Cornell (against).

A Structure Plan is a development plan established for a water catchment area that attempts to look at the overall effect of possible development (in particular subdivision).

Those in the 'For' camp see Structure Plans as preventing bit-wise development, in line with the District Plan, but with no coherent consideration of the cumulative effects on the environment of numerous separate developments being fought as a series of small 'battles'.

Those in the 'Against' camp see Structure Plans as being orientated towards subdivision, and feel that the motivation of those seeking a Structure Plan is to open up an area for subdivision. They suggest alternative strategies, and indeed, The Ministry of the Environment has issued papers looking at alternatives, but currently none of these have been put in place.

Where does the WRRRA stand? and what do we believe to be the opinion of the community as a whole?

To be honest, we do not know the opinions of the community as a whole, except that it is noticeable that most people who have expressed an opinion seem to be strongly for or strongly against.

The WRRRA (currently) supports Structure Plans in principle, on the basis that they seem to be better than relying on the vagaries of the District Plan alone. However, we are against the idea of excessive subdivision of the ranges, and feel that some of the proposed alternatives may provide better protection.

We await developments from the Government, and from the Waitakere Council, which is going to be looking at this whole area after the local elections establish the make up of the new council.

Fire Brigade

The Last Bonfire?

On Saturday 3rd November the Volunteer Fire Brigade will host the rest of our community to Guy Fawkes night. You supply the fireworks, we supply the bonfire. But it may be the last bonfire we have at the Fire Station – by next year we hope to have the back area that we use for this event sealed, and we wouldn't be keen to subject the asphalt to that sort of treatment. So come along from 7pm – we'll light the fire when it gets dark. If wet (like it seems to be most years), we'll postpone until the next night.

Firewise Tips for Fireworks

Whether you come up to the Fire Station or plan to use fireworks at home, please ensure that your children are safe. Apart from the responsible person lighting the fireworks, all others should be 15 metres away. We will have a restricted area where fireworks may be lit. And it may seem like obvious advice, but do keep your supply of fireworks away from the area where they're being lit,

away from heat or flames, and do read the instructions. Even sparklers need care – they burn at more than 700 C. A safer alternative is public fireworks displays.

Recent Calls

- ▶ **Wed 12th, Sep, 5:53 pm** – Smoke seen Scenic Drive, false alarm.
- ▶ **Mon 17th, 6:59 pm** – Petrol spill after car crash, Piha Rd
- ▶ **Fri 21st, 7:37 pm** – Bush fire, North Piha. Fallen power lines started a fire in dry grass that eventually claimed about a hectare of bush. Seven fire crews and appliances were required for about 4 hours, along with an overnight standby. And this only two weeks after torrential rain caused flooding in the same area.
- ▶ **Sat 22nd, 10:45 pm** – Car fire, Anawhata Rd
- ▶ **Sat 29th, 10:25 am** – Fire in a wall of a house caused by heat gun, Scenic Dr.
- ▶ **Sun 30th, 7:10 pm** – Rubbish fire, Bethells Rd

Together with the rush of calls at the start of September, we attended 13 calls in the month – our busiest for some time.

Contacts

Phone 111 for fires and other emergencies.
Otherwise, phone Ian Ford 814 8871 or Richard Seccombe 025 915 525

Weed of the Month

Mexican Daisy

Erigeron karvinskianus has been a weed in the Waitakere Ranges for over 50 years. It is a vigorous spreading ground cover which forms dense mats that suppress regeneration of native plants. You'll see it flowering prolifically in open areas and on roadside banks for most of the year. They are typical daisy flowers about 2 cm across, white to pink with yellow centres.

Mexican daisy can no longer be sold, propagated, distributed or commercially displayed. Small infestations can be physically pulled up, with repeated clearances likely. Effective chemicals are Versatil (10 mls per 10 litres water) and Glyphosate (Roundup G2 or Nufarm - 100mls per 10 litres water + 10mls Pulse), with a follow-up spray after 4 weeks or so.

Tip of the Month

Tackle spreading weeds from uphill or upstream. You'll reduce the re-infestation while you're completing the task.

What's New in Waiatarua

Oratia and Waiatarua residents say farewell to the 'Earth Seed Organics' shop on West Coast Road. 'Earth Seed' have moved in to Glen Eden to new-look premises next to the railway line. (in the former 'Dial a Dino's' building).

Welcome to 'THE WEST COAST SURF SHOP' who open their doors on 13th October at 547 West Coast Road. (opposite Kenlock Motors).

Greg Opie and Nikki Monahan have seen a need for a surf shop in the area and have spent many long hours completely renovating the premises in to a bright, exciting and funky interior.

Greg has been in the surfboard industry for many years and he says that 25 years ago there used to be three surf shops in Glen Eden.

Their shop will promote a few of the local arts and crafts as well as selling surfboards and accessories, repairing dings, selling surf wear, arts and plants.

The West Coast Surf shop will be open 7 days in the summer months.

Another new venture to open it's doors in the Waiatarua area is 'CALICO COTTAGE' at 148 Forest Hill Road (next door to Sapich Wines).

'Calico cottage' supplies the latest patchwork and quilting fabrics, supplies and accessories.

There is also an interesting collection of old sewing machines and toy ones, to view.

'Calico Cottage is open Wed – Sat 10am – 4pm. Phone 814-9658.

The 'jungle drums' have also been busy with rumours of a new and exciting restaurant and café opening in Waiatarua before Christmas. Hold off booking your Xmas party and watch this space.



Our October trip to South Auckland was very enjoyable and we learnt a lot at the Baldicks in Ramarama who in addition to growing the spectacular Peonies breed beautiful Magnolias. We were also shown their worm producing business and learnt secrets to using worm products in our home gardens.

At the Botanic Gardens we checked out the very new threatened native plant garden which was opened by the Prime Minister late September. The garden included a small lake, gentle waterfall and nine natural habitats, displaying about 70 of Auckland's 170 threatened plants. The Spring Blossom Valley, the Camellia and Southern Africa collections were all in full bloom and formed a perfect end to our day.

Next month on November 7 we are also taking a full day as it is prime flowering season. We will meet at Carriages Cafe at the Kumeu Garden Centre for morning coffee at 9.30 and then on to Ashcombe, 1385 Coatesville-Riverhead Highway. This is a spacious country garden with a lake fringed with iris, hosta, primula etc. \$4.00 entry fee. After lunch at Blossoms we will visit another garden in the area.

Ring Eileen on 814 9298 before Friday 2 November with numbers and for car-pooling. Everyone is welcome.

Annual Keep Waitakere Beautiful Clean Up

Thank you to all three people who replied to my notices in the two previous Newsletters. Thank goodness for family, friends and the Fire Brigade. All in all, I think a good time was had by all participants.

You may have noticed the large heap of rubbish outside the Fire Station that we managed to drag out of the bush along some of the Scenic Drive (from just past Arataki to the Radar Dome – approximately 7.5 km)

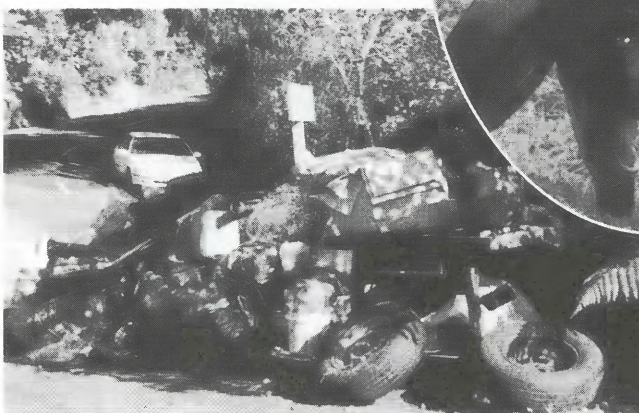
There was a large variety of stuff, from car tyres, car parts, general household rubbish, clothing, beds, a plastic bag with bones and a knife (we had to call the Police out for that) and even a whole car (Reg. owner from Invercargill!!!).

It would be an ideal world if we could stop people from dumping their rubbish in the bush, but maybe we can all make it more difficult for them. If you see someone or a vehicle that looks suspicious, slow down so that you can be seen to be taking notice of them, take notes of car make and registration number. Feel free to let me know by phoning 814-9855.

Helen,
Keep Waitakere Beautiful Co-ordinator for Waiatarua.



We'd all worked heaps hard and were all quite tired at the end of the day



Library News

We have ordered The Consumer Home and Garden. This will be here soon. Also for gardeners Fiona Eadie's book – 100 Best NZ Plants.

NEW BOOKS THIS MONTH:

Gerald Seymour – Untouchable, Greg Iles – Dead Sleep,
Maurice Gee – Ellie and the Shadow man,
Kathy Reichs – Fatal Voyage, Noah Gordon – The Last Jew,
Tamara McKinley – Matilda's Last Waltz.
Noah Gordon – The Last Jew,

The Waitarua Library is located underneath the Community Hall at 911 West Coast Rd. A great place to visit and borrow a book or two.

Jack Diamond

Early this year we lost an outstanding, authoritative historian of the Waitakere Ranges and West Auckland, in the person of Jack Diamond. A man of boundless enthusiasm for any task he tackled.

He influenced the Auckland Museum, Historic Places Trust, various Science Congresses, University of Auckland, to name only a few.

He had the deep respect of the Scientific community for his patient research, never relying on hearsay evidence from old times without rigorous cross-checking. He was a good listener and only spoke when he had something worthwhile to contribute.

Even in his 70's he faced the gruelling task of personally tracing most of the streams in the ranges from the sea to the source. I have a map with all these with names provided for all the tributaries.

Bruce Hayward of the Museum shared this task.

I was indeed fortunate to be a friend of Jack Diamond for 40 years.

Jim Forbes.

Old Bill's Soliloquy

Old Toby? He's twenty, very old for a dog
And I am just four score and nine
We don't get about as we did in the past
Old Toby sleeps most of the time.

As I sit here beside him looking out
over the bay
I dream of the times I have had
With men I have known in the bush
and the mills
Tough fellows, but few of them bad.

Today people see nought but bush on
those hills
And sand on the beaches they roam
But in the last century to dozens of folk
The Waitakere Ranges was home.

Many men were required when a mill
started up
As they did in the Ranges of yore
There were bushmen, mill hands, store
keeper and cook
Blacksmiths, bullock drivers and more.

The small shanty towns were homes to
these men
And their wives and their children as well
A community hall and a school house
perhaps
Were built when the numbers did swell

As the years passed away and the bush
was cut out
The mill would have to close down
So the men drifted off to another bush
mill
Or perhaps to a job in some town.

To leave open spaces is not nature's way
She reclothes all clear land, once again
First with teatree and scrub and when
this has grown tall
New bush grows o'er the terrain.

The mill houses rot and collapse in due
time
The trees push their way through the floor
Leaving only the hardy, old English
flowers
Or a rambler that grew round the door.

There are no shanty towns in the
Ranges today
Nor timber mills as years before
No roar of the water from tripped
driving dams
Or the screech of a circular saw.

No ring of an axe biting in to the trunk
Of a tall stately kauri tree
Or the crack of the whip and the
language profane
From the mouth of the old bullocky.

You no longer see puffing round the sea
cliffs
And on trestles o'er the dune sand
The tiny bush loco with it's truck load of
timber
A hush has settled down on the land.

And so I look out, on the sea and the bush
I dream of the times I like best
Of the old virgin forest in which I once
worked
And my mates who have now all gone
west.

FROM 'THE WAITAKERE BALLADS' BY JOHN T. DIAMOND.

Letters to the Editor

Greetings,

I write in appreciation of the efforts of our Ratepayer Association and those who produce the newsletter. Many thanks to you all.

However, I note in Geoff Wood's recent column, reference to a 'new logo' for the association.

I wonder what is wrong with the current one? It doesn't seem to be 'broken' so why does it need 'fixing'?

Surely not the change-for-the-sake-of-change we have seen so much of in recent years by Government Departments.

I would have thought there were plenty of important issues to give time and attention to.

Yours sincerely, P Radford.

Dear Madam Editor

I would like to bring to the attention of fellow Waitaruan's the plight of a stranded motorist.

On Friday morning I was travelling down Mountain Road and I moved a little too far to the left to let pass some vehicles coming up the hill. After coming to rest against the wooden barrier – very grateful not to be bouncing down in to the valley – I was horrified to see all three vehicles continue serenely up the hill.

All in all, between the time of the accident and the time of my partner's arrival to winch me back on to the road, 15 vehicles passed. One stopped, (my neighbour), one slowed down to ask if I was alright, 3 more we can excuse because my neighbour was stopped with me. But that leaves 10 vehicles who passed without even slowing – and in some cases avoiding eye contact.

There was a council worker at the top of the road, with truck pointed down the hill and he did not come down to investigate – I don't know whether anybody bothered to suggest it to him, since he could not otherwise have known.

Since moving in to the neighbourhood around a year ago, my partner has rescued six stranded motorists, either winching them out or just reassuring them and providing a quick push or a bit of driving expertise. We will continue to do this, because that is the way we prefer to behave, but my last experience has certainly not given us any encouragement.

We would like this month's brickbat to go to all those people (they cant ALL have been strangers to the area – and even so!) who passed me by.

As it happens I was quite alright, and help was on the way ; but you didn't know that.

Jenni Green, Turanga Road.

Brickbats and Bouquets

A bouquet to the resident who kindly stopped and retrieved two of the vandalised letter boxes flung to the side of West Coast Road and drove them back to their addresses.

A brickbat to those drivers who passed by the stranded motorist on Mountain Road one Friday morning in September.

More brickbats this month to all the non attending Waitaruan's to the 'Waitarua Clean up', Operation Spring Clean, on Saturday and Sunday 22nd and 23rd of September. Thank you to those who did remember and made the effort to keep Waitarua beautiful.

Neighbourhood Watch

On Sunday morning 16th September two letter boxes were found trashed and lying on the verge of West Coast Road. These were retrieved and returned to their addresses by a local Waitaruan.

#631 was found damaged and lying on the road outside the Oratia School, #746 was thrown in the grass verge outside 755 West Coast Road and #634 had been knocked from it's stand and damaged. The letter box at #755 has since been bent backwards on to the ground.

This is obviously a late Saturday night activity for some bored person/s.

Keep your eyes and ears open and take registration numbers of any suspicious vehicles.

Advertising

This is free to financial members
for 2001, January to December.

A list of financial members is available at the library, and any
queries about membership can be answered by
phoning the Treasurer – Eileen Powell on 814-9298

Repeat commercial advertisements
of members will only be printed
as space allows.

AUCKLAND SUN CLUB INC. The family club for clothes-free recreation invites you to visit. For further information please call 814-9973.

WEST COAST VET CLINIC – Offering full veterinary service for your pets.
24 hour service Phone 818-4104.

SOLICITOR – Are you buying and/or selling your business/house? Are you interested in setting up a Family Trust? Phone Geoff Wood for your legal needs at 623-7541 DDI or 836-8630 a/hrs weekdays. Home visits by arrangement.

WORK WANTED: Registered drainlayer, 30 years experience. 6 tonne and 2½ tonne diggers for hire. Phone Ray 814-9242.

WEB PAGE DESIGN, Desk top publishing, Graphic Design, Computer Support, Phone Petrik 8365202.

ATARUA GARDENS BED AND BREAKFAST: No room for your out of town visitors? Contact Carol and Denis. Phone 09 814-9706 or 025-283-7544.

LAWYER AND NOTARY PUBLIC: John Hendrikse, available 24 hours by appointment. Are you buying and/or selling your house? Competitive fees. Home visits by arrangement. Overseas documents can only be witnessed by a notary public. Familiar with Afrikaans. 914 West Coast Road. Ph/Fax 814-9991.

ELECTRICIAN: Phone Jim your local man Phone 814-9344.

BABYSITTER – Mature, honest and reliable lady. Experienced. \$8 an hour Phone Juliette 814-8802.

HOUSE FOR SALE: ORATIA/WAIATARUA – low maintenance, double storey, 4 bdrm. family home, diesel central heating, dble garaging with workshop, large rumpus. Extensive valley views. \$317,000. Phone 814-9251.

Neighbourhood Watch

The names of our current co-ordinators are listed below. If you haven't been approached yet and would like to belong to one of these groups, give the co-ordinator a call.

NAME	ADDRESS	PH/FAX	E-MAIL
Mary Kelly, JP	3 Atarua Gardens	814-9857 + Fax	turtle@xtra.co.nz
Denis Graham	Back up - Atarua Gdns	814-9706	
Ross & Kath Mullins	330 Forest Hill Rd	814-9402 + Fax	
Jenny McGee	886 West Coast Rd	814-9954	
Chris/Liz Field	799 West Coast Rd	814-9876	crislizf@voyager.co.nz
Adith Stoneman	8 Kauri Loop Rd	814-9822	
Margaret/Paddy Marshall	19 Raroa Tee	814-9859	
Gaelene/Tony Goodrick	17 Cascade Ave	814-9788	

Please accept my Membership to the
Waiatarua Ratepayers and Residents Association

for 2001

I enclose: \$10 Household, \$7 Single Occupant

Name

Address

Phone

To Treasurer

Waiatarua Ratepayers and Residents Association

911 West Coast Road, Waiatarua, Auckland 8 **or leave at the library**

TREE WORK: Fully insured and qualified arborists.
Phone Guy Thomas 813-1481 or 021-244-8733.

OUTBACK COUNTRY COLLECTION: Gorgeous Preserves. Chutneys and relishes. Available in three sizes. Large bottles \$5. Medium bottles \$4. Small bottles \$2. Gift baskets available at various prices on application. Free delivery in the Auckland area. To order Phone Jill 814-8825.

LAWN MOWING: Local, reliable. Phone Eric 8372333.

MATHS TUITION, ALL LEVELS. Experienced high school teacher Ph 814-9269

FAY'S YOGA CLASS – Unique programme of stretching, relaxing fitness health – Glen Eden Phone 817-8233.

KENDRICK PAINTING AND DECORATING: for quality and service.
Phone Graham on 837-1612.

VICKY'S BEAUTY THERAPY: 10 years experience. Facials, waxing, massage, manicures etc. Available 7 days Phone 814-9317.

FIREWOOD FOR SALE: shed stored, pine and macrocarpa \$50-\$65.
Phone 814-8833.

BABYSITTER: Friendly, mature and responsible 15 year old girl. \$6 per hour. Phone Danielle on 814-9131 or 021-268 4401.

HORSE MANURE: \$1 per bag at 253 Forest Hill Road. Phone 814-9771.

WOODEN FARM GATES AND ENTRANCE GATES made to order.
Phone 814-9700.

STRESS? NECK AND BACK PAIN? OOS? SCIATICA? CARPAL TUNNEL? SPRAINS AND STRAINS?.. if so, maybe I can help. I am TMA (NZ) registered. Phone Rowan anytime on 8337866.

WANTED: Tuition required for 6th form Biology and 7th Form Maths with Stats and Physics. Please contact Mrs Grave on 814-8834.

BABYSITTER: Friendly, outgoing and experienced 6th form pupil available evenings and weekends – \$6 per hour. Phone Tara on 814-8834

HOUSE FOR SALE: Waiatarua. Views for ever – 2 harbours, Coromandel, outer islands – glorious! 3 – 4 bedrooms, plus workshop and large separate studio/workshop. Heart rimu floors, large deck' tuis and pigeons in the birdbath. \$480,000. Phone Tony Bacon on 814-9860.

WANTED/NEEDED NOW. House for rent in Oratia School Zone for a family with 2 young boys, so a little flat land is needed. All considered. Call Adith on 814-9822

CLEANER WANTED for two Scenic Drive homes. Phone Jo on 814-8981

Waiatarua Community Hall Hire

Remember to hire this excellent facility for your meetings, parties, dances, birthdays (children's and adults) etc.

Lovely wooden floor for dancing.

Friday and Saturday evenings, (including chairs & tables) \$100.

Hourly rate, (max 3 hours) \$10 per hour

Sunday to Thursday evenings

\$65, hourly rate \$7 per hour, (max 3 hrs)

Daily rates Monday – Friday, Full day \$25, hourly rate \$5

Saturdays & Sundays, Full day \$35, hourly \$7

Crockery hire \$25, Bond up to \$250.

Discount for regular users. Community Barbecue hire \$20

Hall phone 814-9353

Phone the Custodian Pauline Isaachsen on 814-9847

NOVEMBER/DECEMBER NEWSLETTER

Copy needs to be in the hands of
The Editor,

757b West Coast Road Road, Waiatarua. Phone 814 9945

EMAIL: forwardthinking1@xtra.co.nz

by WEDNESDAY 7th NOVEMBER, 2001

Thanks to the Longley Family for printing this Newsletter.

Opinions expressed in this newsletter are not necessarily those of the Editor or the Waiatarua Ratepayers and Residents Association.