



# Community News

NOVEMBER 1997

EDITOR : MARGARET BLUMHARDT

## OPERATION SPRING CLEAN 1997

On Saturday October 25 about fifteen people, including four children, met at the Waiatarua Fire Station. We proceeded to remove rubbish from out of the bush and from along the road sides.

In total over fifty car tyres plus inner tubes, several tonnes of baled newspapers, car doors, bonnets, roofs, various engine parts, fridges, television sets, household building materials and forty bags of other rubbish were collected. This was in a relatively small area of Waiatarua. The Swanson Road end of the Scenic Drive and Piha Road areas were not looked at.

It's sad that the Waitakere Ranges area is getting more and more a dumping ground for commercial and other rubbish. It's a sign of the times I'm afraid.

Many thanks to those people who worked so hard and supplied transport free of charge. To the Waitakere City Council for the WasteCare bin, gloves and bags and to the Waiatarua Fire Brigade for "person power" and the impromptu barbecue at the end of the day.

*Tony Holt*

## ORATIA VALLEY FAMILY WALK & BBQ

On 23 November 2.45 pm for 3pm start.

*Don't miss this unique opportunity to study the history of Oratia and see parts of the lower Oratia Valley that are inaccessible by road.*

The walk will be on private land starting at the bottom of Holdens Road, crossing Oratia stream and travelling through orchards to Knock-na-Gree where we cross the stream again and follow it to Kelly's bridge. After a short walk along West Coast Road to the Church, we cut through to Carter Road. Here we travel through more orchards coming out on West Coast Road by the Dairy. From there we walk behind the houses, past the cemetery to the Folk Museum, where we make our way across the Oratia stream back to our starting place where we finish with a bar-b-que.

Walkers will be guided around the walk in groups of about 25 people. Please follow the instructions of your guide. No dogs please.

The walk is about two hours duration and is reasonably simple but does require you to navigate two bridges (tree trunks) over the Oratia stream and in places does get a bit steep.

Bring sturdy footwear, rain clothes if wet and food and drink for the barbecue (sausages will be for sale).

The cost is \$5 per person, children go free but must be accompanied by an adult. Tickets are available from the Oratia School

office or by arrangement from Val Lyon (818-5719). On the ticket is a map and 24 places of historic interest for you to watch out for during the walk.

Parking is available in Holdens Road or on the grounds of the Victorian Junction Railway Station, the second left on Holdens Road (West Coast Road end). Follow the signs on the day.

In the event of heavy rain the walk will be postponed to Saturday 29 November, details will be broadcast on 1ZB. If you are uncertain phone Val Lyon (818-5719)



Summer has come so we have arranged a day out in the Whitford area, visiting Haunui Farms and Ayrilies. Both of them are large country gardens and Haunui is also a working thoroughbred stud farm.

Bring a lunch and \$10 entrance fees.

The day is Wednesday November 26m leaving at approximately 9.30 am. Phone Eileen on 814-9298 for directions or car pooling.

You are very welcome to join us at any time, there are no fees and you can come as often as you like or just once.

## LIBRARY NEWS

New members always welcome!

This month we have a lovely selection of new books.

### Cooking

*Annabel White* Best Recipes

(as featured on ZB Saturday morning radio).

### Garden

*Maggie Barry* The Garden Show

### 1997 - Pulitzer Prize Winner

*Frank McCourt* Angela's Ashes

### Women

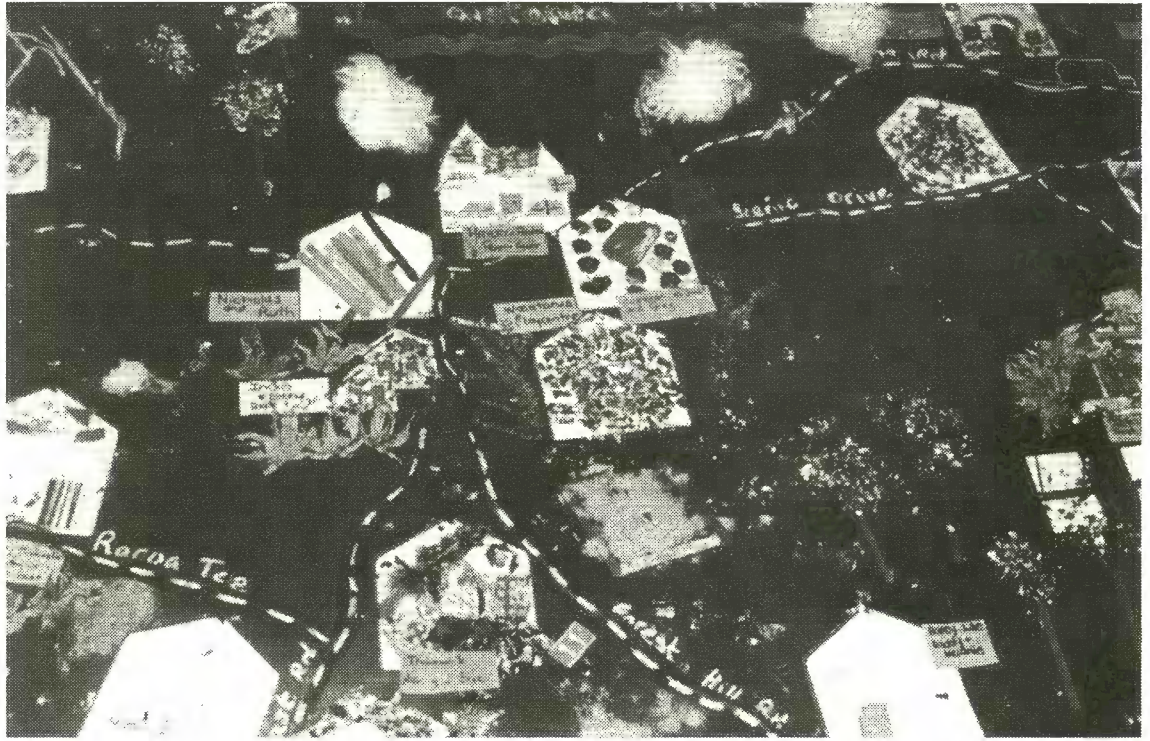
Chicken Soup for the Women's Soul (New York Best Seller, 101 Stories to open hearts and rekindle spirits).

Plus a lot of new mysteries, excitement and romance, something for everyone.

## PLAYCENTRE

This month at Playcentre we have had two new families enrol. We welcome Kari and Eimnin Hoey and Elke and Nadia Key. We have also had to farewell Ruth and Nicholas Allan. Ruth has been an active and supportive member for five and a half years and Nicholas since he was a new baby. They will both be sadly missed and we wish them well.

Very special thanks to Margaret and Terry Blumhardt for donating hats, boxes and various other useful items to the centre.



The following article was printed in the latest National Playcentre journal.

### A great big collage creation

Our centre recently had a particularly enjoyable and productive session, despite the rainy weather. Nicholas (five) was wanting to make a map as we arrived on session, so it began!

Waiatarua Playcentre serves a large semi-rural area and so it was quite a challenge to ensure the map would cover all the roads where people lived. Onto a piece of large card, roads were named, then the map was placed on the floor. Collage was set out and we even found card that made great house shapes.

The map had immediate appeal and became a real focus for the session. Some very close, precious moments were shared by parents and children, as they decided how best to decorate their house. Each house became special and unique.

As the houses were stuck on, the environment began to be decorated too. I loved the 'glitter trees' with coloured ice-cream stick trunks that Bailey (four) put on the map. I thought this was a lovely image of the native bush in our area.

The session ended with everyone feeling a deep satisfaction at

how the map had turned out. And on our display at the next community market day, Waiatarua Playcentre puts themselves on the map! Perhaps you might like to make a map too!

*Ruth Allan, Waiatarua Playcentre (Te Akoranga Assn.)*

The following poem was written by Jill Rennie from the Paeroa Playcentre and was published in the Playcentre Journal.

*Playcentre is our playing place  
Real fun place to be  
We're busy learning all the time  
There's lots to do and see.  
  
We've lots of toys to play with  
There's cars and dolls and swings  
There's blocks and books and puzzles  
And many other things.*

*We like to do bright paintings  
Make playdough morning tea  
Drive tractors in the sandpit  
Build blocks up 1 2 3*

*Sometimes we do baking  
Or hunt for insects in the grass  
Or dance and sing to music  
The morning fast*

*So why not come and see us  
There'll be lots for you to do  
You just might get to like it  
And become a playcentre family too.*

The Playcentre is situated down the drive next to the Community Centre, 911 West Coast Road, and if you would like to join us our session times are Monday, Wednesday and Friday 9.30 am - 12 noon. You can phone Playcentre during these hours on 814-8835 or Debbie on 814-9187 after hours.

### WAIATARUA COMMUNITY LIBRARY

911 West Coast Road,  
under the Community Centre.  
Phone 814-9353

#### Hours of Opening

Thursday	10am – 12 noon
Friday	7pm – 8 pm
Saturday & Sunday	11am – 12 noon

Books can be returned at any time  
through the chute by the library door.



Old barn photographed in 1972.



## ISAACHSEN'S FARM

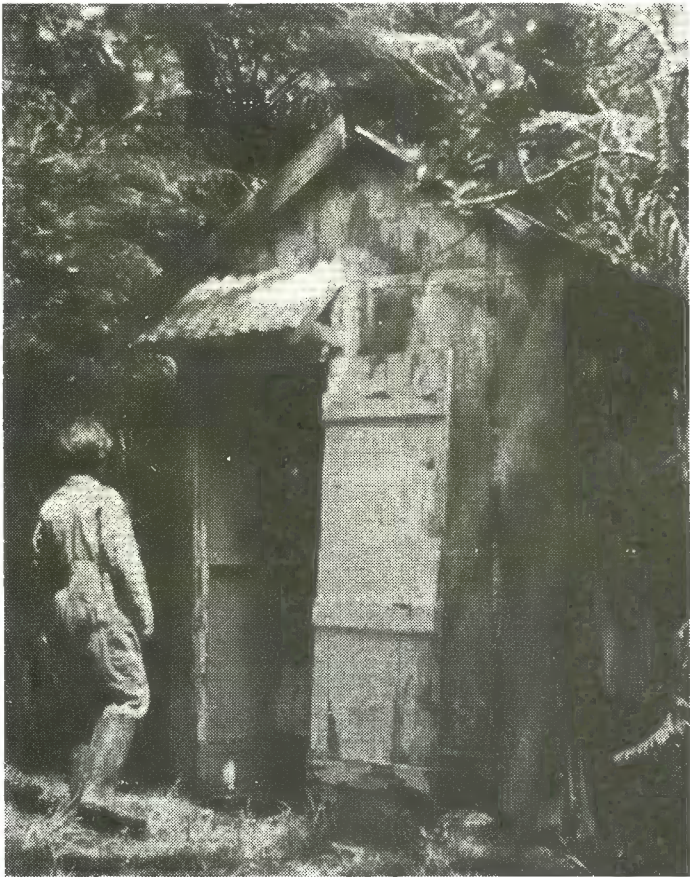
Mr and Mrs W. Isaachsen and their two sons Harald and Olaf came to Waiatarua in 1921 and took up land on West Coast Road. They farmed 89 acres, not 12.5 acres as stated in "Song of Two Waters".

Their 10 x 12 house, the barn and their milk separator shed were all on the property now owned by Blumhardts, 849 West Coast Road, and the milking shed was on what is now the next property down the road.

Harald and Olaf slept in the loft of the barn, pictured, which has since been demolished. Their milk separator was in the little shed, also shown, hidden in the bush. The separator they used was given to the West Auckland Historical Society and is on display at Hellaby House.

When Harald married Annie in 1931 they built a house on part of the land further down the road and later Harald's parents joined them and the higher block which had not been paid for was sold.

They had three sons Roald, John and Sam. John is the only one still living in the district.



Isaachsen's small shed in the bush with a cream separator  
Unfortunately it became rotten and dangerous and had to be demolished three or four years later.

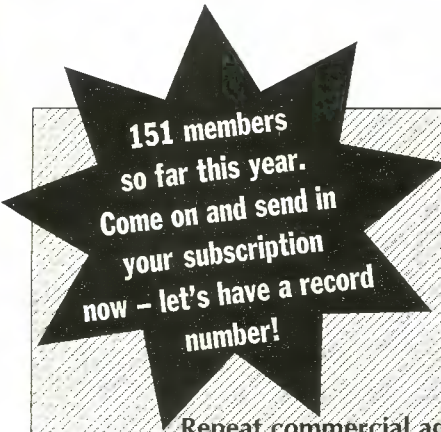
A little humour from a book my father was given in 1921

### *Just Like A Man*

*He sat at the dinner table  
With a discontented frown,  
The potatoes and steak were underdone  
And the bread was baked too brown;  
The pie was too sour and the pudding too sweet  
And the roast was far too fat;  
The soup was greasy, too, and salt,  
'Twas hardly fit for the cat.*

*"I wish you could eat the bread and pie  
I've seen my mother make;  
They are something like, and 'twould do you good  
Just to look at a loaf or her cake."  
Said the smiling wife, "I'll improve with age-  
Just now I'm but a beginner;  
But your mother has come to visit us,  
And today she cooked the dinner."*





# ADVERTISING

*This is free to financial members for 1997,  
January to December. A list of financial members is available at the library,  
and any queries about membership can be answered by phoning  
the Treasurer - Eileen Powell on 814-9298.*

**Repeat commercial advertisements of financial members will only be printed as space allows,  
for the remainder of the financial year**

STAINED GLASS STUDIO - 293 Forest Hill Road 814-9293. Selection of native bird window hangings from \$26 - tui or kowhai, pigeons on berries etc. Also beautiful fairies, flowers, children's characters - Pooh Bear etc. All prices wholesale rates. Buy now for Christmas and be early for best selection.

FOR SALE - Particle Board - 2400 x 1200 x 5mm, 30 sheets at \$5 each. Phone 814-9843

PAINTER REQUIRED for interior work in private dwelling, on labour only basis. Good hourly rate offered. Would probably suit retired or semi-retired tradesman. Phone Tony on 814-9062.

PONGA PRODUCTS FOR SALE - logs (including growers) for fences and landscaping and ponga pots (many sizes). Phone/fax Warren on 814-9129

CHRISTMAS TREES - you choose, we cut! \$10, or choose now - \$5, cut later - \$5. 849 West Coast Road, sign on roadside. Opening from Nov 22 daily, 1 pm - 6 pm, also Sat - all day 'til 6 pm. (Sundays all day from Dec 7). Open most mornings, and evenings after 7 pm by arrangement and whenever the gate is open. Phone 814-9843

### "OFF THE VINE RESTAURANT AND WINE BAR"

A La Carte Dining. Hours: Wed. to Sun. from 6 pm for Dinner. Lunch Sat. & Sun. from 12 noon. Try our new Spring menu & enjoy superb views. We are fully licensed and BYOW. Join our Wine Club and attend regular wine tastings. For information and/or Reservations please phone 814-9804.

GRAZING WANTED for one quiet two year old mare, with other horses. Responsible adult owner. Call Jaana Britton on 814-9950.

## NEIGHBOURHOOD WATCH

The names of our current co-ordinators are listed below. If you haven't been approached yet and would like to belong to one of these groups, give the co-ordinator a call.

Name	Address	Phone no.
Mary Kelly	3 Atarua Gardens	814-9857
Tony Holt	56 Bush Road	814-9688
Ross & Kath Mullins	330 Forest Hill Rd	814-9402
Jenny McGee	886 West Coast Rd	814-9954
Chris Field	799 West Coast Rd	814-9876
Ngairé Mason	21 Tui Crescent	814-9036
Bernie Oudemans	15 Quinns Road	814-9941
Margaret & Paddy Marshall	19 Raroa Tce	814-9859
Daniel Muller	550 Scenic Drive	814-8998
Gaelene & Tony Goodrich	17 Cascade Ave	814-9788

Please accept my subscription to the  
Waiatarua Ratepayers and Residents Association  
for 1997

I enclose:      \$7 Household,      \$4 Single Occupant

Name .....

Address .....

Phone .....

To Treasurer

Waiatarua Ratepayers and Residents Association  
911 West Coast Road, Waiatarua, Auckland 8  
or leave at the library

## WAIATARUA

### COMMUNITY HALL HIRE

Remember to hire this excellent facility for your meetings, parties, dances, birthdays (children's and adults) etc. Lovely wooden floor for dancing.

Friday and Saturday evenings, (including chairs & tables) \$100.  
Hourly rate, (max 3 hours) \$10 per hour

Sunday to Thursday evenings \$65, hourly rate \$7 per hour, (max 3 hrs)

Daily rates Monday - Friday, Full day \$25, hourly rate \$5  
Saturdays & Sundays, Full day \$35, hourly \$7

Crockery hire \$25, Bond up to \$250.  
Discount for regular users. Community Barbecue hire \$20

Phone the custodian, Terry Blumhardt, on 814-9843

## DECEMBER NEWSLETTER

Copy needs to be in the hands of  
Margaret Blumhardt  
PHONE 814-9843

849 West Coast Road, Waiatarua  
(opposite Raroa Terrace)

by WEDNESDAY 3rd DECEMBER, 1997

Opinions expressed in this newsletter are not necessarily those of the Editor or the Waiatarua Ratepayers and Residents Association.